

FO SV Pro

3D Measurement Industrial Videoscope

Suitable for military, aviation, automobile, special inspection, precision industrial measurement, survey and other fields.



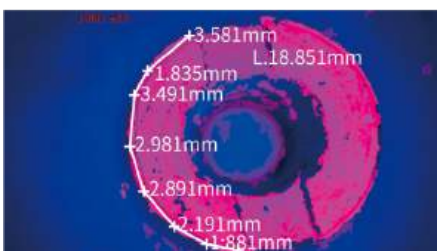
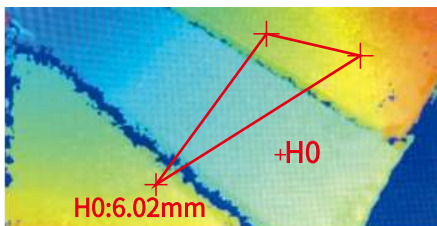
Scan the code to watch the video

Features

Outstanding measurement capabilities

Real-time display the object distance, high measurement accuracy, and rich 3D point cloud images provide reliable guarantee for accurate measurement and post-measurement.

Point-to-point, point-to-line, point-to-surface, curve measurement, defect area measurement, section view and other measurement methods cover most customers' request.



One-click for 3D modeling

High-definition binocular 3D modeling makes the measurement more accurate.



High resolution

The device uses 720P resolution binocular camera, high-sensitivity CMOS sensor, and HD touch screen display, provides smooth, real, clear, and stable detection images. adding humanized interactive menu to make the operation much easier.

Higher resolution reveals tiny defects



in engine cavities

Excellent lighting illuminates entire large cavities



Inside pipe cavities

True color reproduction for vivid details



Corroded/ablated materials

Advanced noise reduction performance improves real-time image quality



Welding

Modular design

Easy to carry, repair, replace, and take into account more requests.



Parameters

Software

Image control	Stepless amplification	
Temperature warning	Over temperature alarm	
Languages	Simple Chinese and English	
Special image processing	Negative	
Export support	U disk	
Still image	Resolution	1280X720
	Format	JPEG, BMP
Video	Resolution	1280X720
	Format	AVI, ASF
Stereo measurement	Distance	Distance between 2 points
	Point To Line	Vertical distance between 1 point to a line
	Depth	The orthogonal depth/ height between 1 point to a plane
	Area/multi Line Segment	Perimeters and area of multiple points
	Measurement Accuracy	0.1~0.2mm
Error Rate	2~5%	

Controller

Size (W*D*H)	351X163X122
Display	6.5 inches (1024X768) LCD
Input port	Enhanced dedicate interface
Output port	HDMI port
USB	USB3.0
Brightness	Manual 10 levels
FPS	More than 24 FPS
Memory capacity	4GB
Recording medium	128GB SSD
AC power supply input	AC 100V~240V, 50/60Hz
AC power supply output	12.6V 5A
Battery	Rechargeable Li-ion battery
Battery capacity	11.1V 7000mah
Working time	More than 2.5 hours

Camera

Diameter	Φ6.0/3.9mm	Φ6.0/3.9mm
Image sensor	Built-in Mega pixel digital image sensor	
Pixels	1,000,000	1,000,000
DOF	8-80mm	8-80mm
FOV	120°	120°
DOV	0° front view	90° side view
White balance	Auto	Auto
Housing material	Titanium ally	314 stainless steel
Light source	LED	LED
Light life	100,000 hours	100,000 hours
Brightness	40000lux	
Temperature sensor	Built-in sensitive temperature sensor	
Articulation lock	Available	Available
Interchangeable cable	Yes	Yes

Insertion cable

Diameter	Φ6.0/3.9mm ± 3%
Cable length	1.5/2/3M
Cable cover	Tungsten cable
Bending direction	360°
Bending angle	>120°
Bending control	Motor driven joystick control

Operating environment

Cable working temperature	-20-95°C
Humidity	Max 95%
Camera working temperature	-20-95°C
Whole set working temperature	-25-45°C
Storage temperature	-20-50°C
Waterproof	IP65

FIBEROPTIC

Remote Visual Inspections